



Park 10 Business Center

16830 Barker Springs Road, Suites 407 & 408, Houston, Tx

Park 10 Business Center is a five-building light industrial park located in the heart of West Houston's Energy Corridor, minutes from both Beltway 8 and the Grand Parkway. The business park offers immediate access to Interstate 10 via Barker Cypress Road, as well as a range of suite sizes and loading options to fit any tenant's needs.

TOTAL BUILDING: 19,821SF

AVAILABLE: 5,827 SF

OFFICE AREA: 4,322 SF

CONSTRUCTION: Concrete Tilt-wall

PARKING: 1.5:1000, approximate

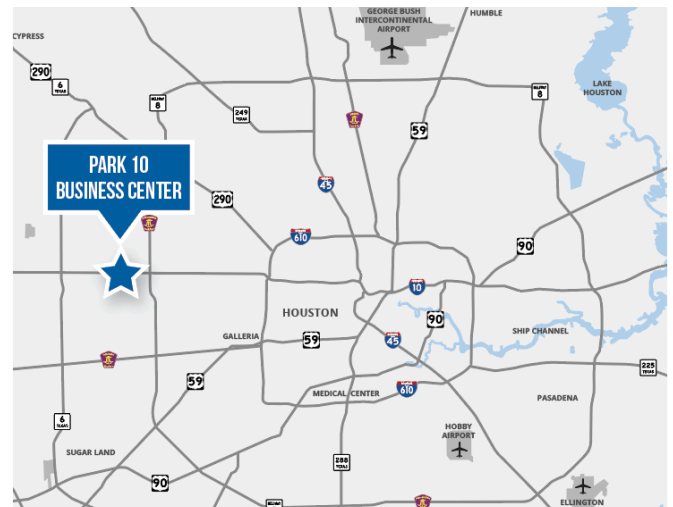
CLEAR HEIGHT: 12'

FIRE SPRINKLER: None

LOADING: Semi-dock Loading

www.brookfieldproperties.com

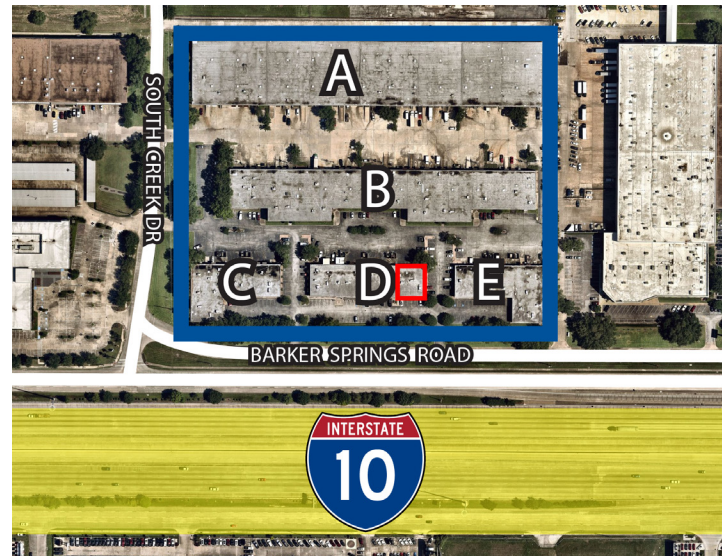
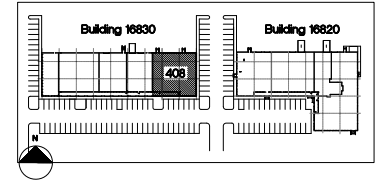
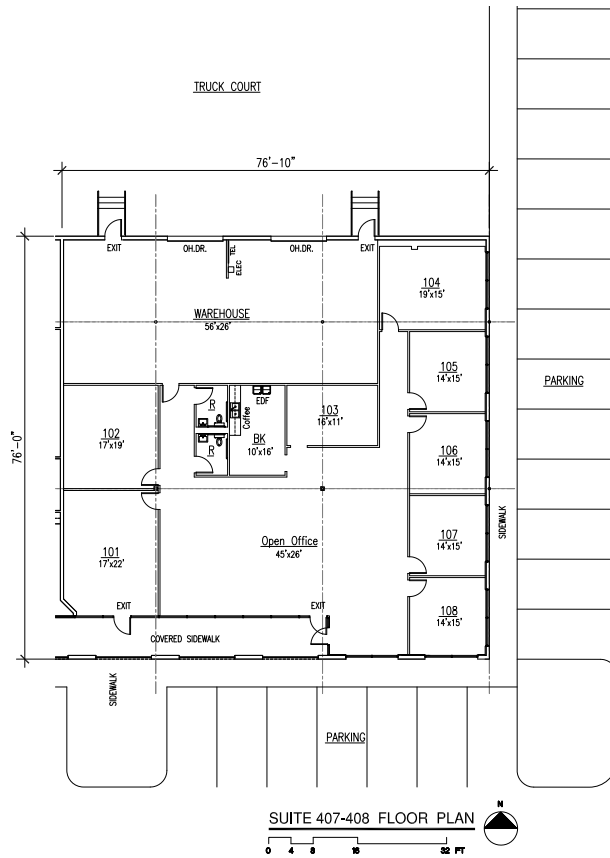
Location



- Equidistant between Beltway 8 & the Grand Parkway
- In close proximity to Katy and Cypress, two of Houston's fastest growing suburbs
- Located near several large corporate campuses within Houston's Energy Corridor
- Within three miles of several large retail centers providing an abundance of amenities

Brookfield Properties

Park 10 Business Center
16830 Barker Springs Road, Suites 407 & 408, Houston, Tx



For more information, or to set up a tour, please contact:



Craig Bean

D 713.602.3752

cbean@holtlunsford.com

John Kruse

D 713.602.3756

jkruse@holtlunsford.com

Carter Holmes

D 713.602.3751

cholmes@holtlunsford.com

Joonas Partanen

D 310.765.3232

joonas.partanen@brookfieldproperties.com