

Brookfield Properties



Park 10 Business Center

16820 Barker Springs Road, Suite 522, Houston, Tx

Park 10 Business Center is a five-building light industrial park located in the heart of West Houston's Energy Corridor, minutes from both Beltway 8 and the Grand Parkway. The business park offers immediate access to Interstate 10 via Barker Cypress Road, as well as a range of suite sizes and loading options to fit any tenant's needs.

TOTAL BUILDING: 20,957 SF

AVAILABLE: 7,823 SF

OFFICE AREA: 5,358 SF

CONSTRUCTION: Concrete Tilt-wall

PARKING: 1.00:1000, approximate

CLEAR HEIGHT: 12'

FIRE SPRINKLER: None

LOADING: Semi-dock Loading

www.brookfieldproperties.com

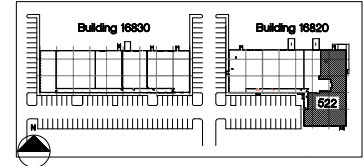
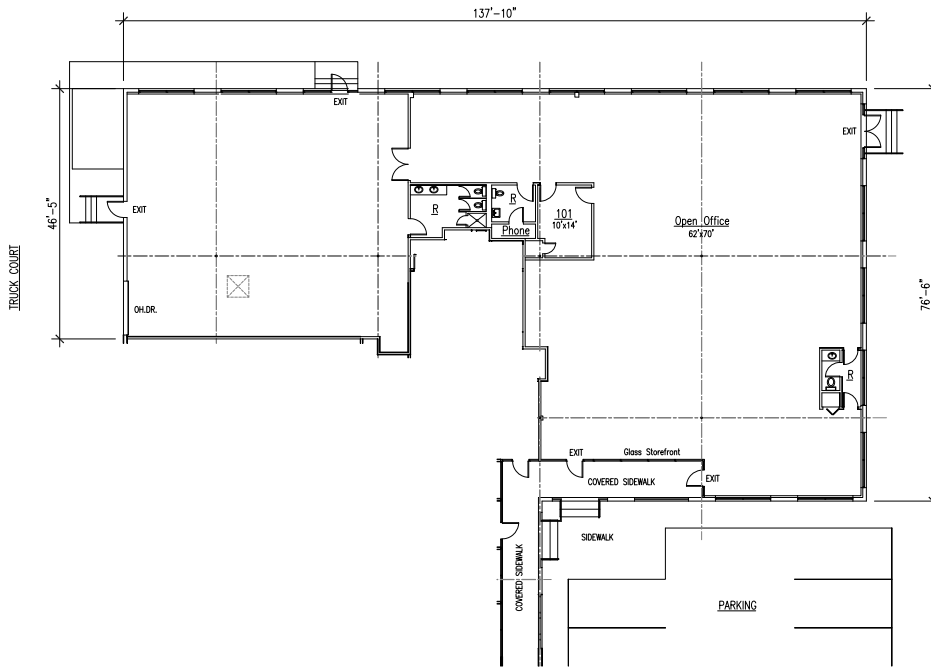
Location



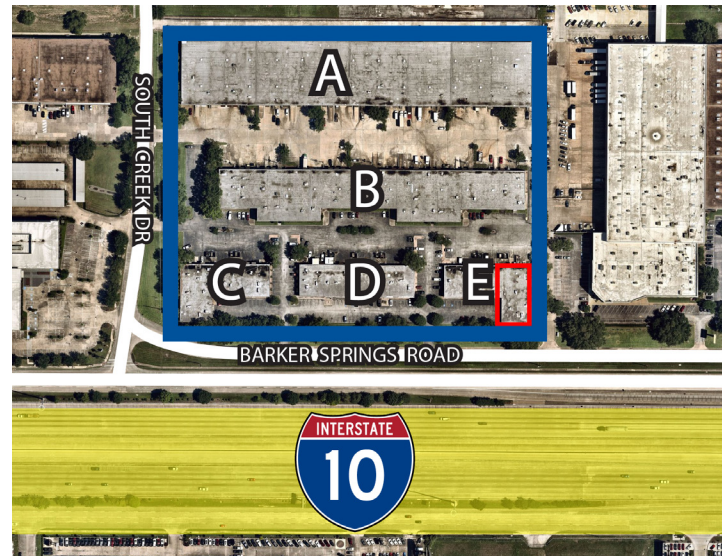
- Equidistant between Beltway 8 & the Grand Parkway
- In close proximity to Katy and Cypress, two of Houston's fastest growing suburbs
- Located near several large corporate campuses within Houston's Energy Corridor
- Within three miles of several large retail centers providing an abundance of amenities

Brookfield Properties

Park 10 Business Center
16820 Barker Springs Road, Suite 522, Houston, Tx



SUITE 522 FLOOR PLAN
0 4 8 12 FT



For more information, or to set up a tour, please contact:



Craig Bean

D 713.602.3752

cbean@holtlunsford.com

John Kruse

D 713.602.3756

jkruse@holtlunsford.com

Carter Holmes

D 713.602.3751

cholmes@holtlunsford.com

Joonas Partanen

D 310.765.3232

joonas.partanen@brookfieldproperties.com